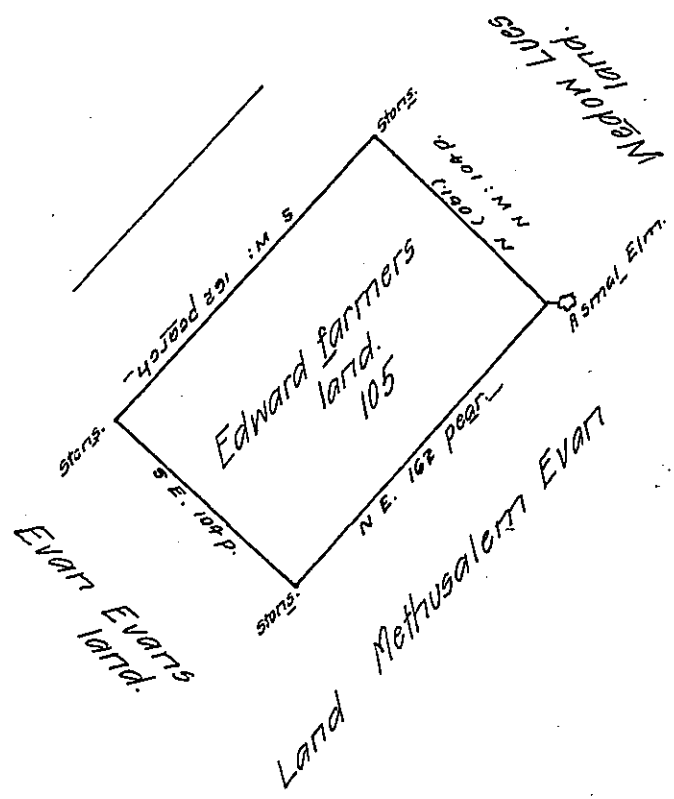


FORM No. 1.



This tract of land surveyed in right of Edward Farmers by virtue of an order from Jacob Taylor.

Beginning at a small Elm by Mathusalem Evars land then north west one hundred and four paces to a heap of stones by Widow Lues land then southwest one hundred and sixty two paces to a heap of stones then south east one hundred and four paces to another heap of stones by Evars Evars ~~land~~ then northeast one hundred and sixty two paces to the place of beginning containing one hundred and five acres surveyed the 12th of the 12 month 1729³⁰

By me John Chapman

IN TESTIMONY that the above is a copy of the original remaining on file in the Department of Internal Affairs of Pennsylvania, made conformably to an Act of Assembly approved the 16th day of February, 1833, I have hereunto set my Hand and caused the Seal of said Department to be affixed at Harrisburg, this seventh day of September 1909.

Secretary of Internal Affairs. 50